

Grove GMK6300L

North American Product Guide

ASME B30.5
Imperial 85%

Features

- (300 t) 350 USt capacity
- 15,6 m - 80 m (51 ft - 263 ft) seven-section full power MEGAFORM™ boom with TWIN-LOCK™ pinning
- 12 m - 21 m (39 ft - 69 ft) hydraulic offset bi-fold swingaway
- 2 x 8 m (26 ft) intermediate lattice inserts
- 92,5 t (203,900 lb) counterweight with hydraulic removal system
- MEGATRAK™ independent hydro-pneumatic suspension
- Allison 4500 SP transmission





Load charts

Main boom

 15,6 m - 80 m
 (51.1 ft - 262.5 ft)
  92 500 kg
 (203,900 lb)
  27 ft 9 in spread
 (100%)
  360°

Feet	51.1	68.7	86.1	103.4	120.8	138.1	155.9	173.5	191.6	209.5	227.4	245.3	262.5
8.0	700.0*												
10.0	418.0	352.0											
15.0	348.0	324.0	304.0										
20.0	288.0	276.0	260.0	230.0	182.0								
25.0	244.0	240.0	230.0	217.0	178.0	139.0							
30.0	207.0	207.0	202.0	192.0	178.0	139.0	110.0	84.0					
35.0	172.0	178.0	177.0	171.0	167.0	139.0	110.0	84.0	64.0				
40.0		152.0	152.0	150.0	152.0	134.0	110.0	84.0	64.0	50.0	38.8		
45.0		134.0	132.0	130.0	132.0	124.0	106.0	84.0	64.0	50.0	38.8	31.6	
50.0		118.0	118.0	116.0	116.0	115.0	101.0	81.0	64.0	50.0	38.8	31.6	26.4
55.0			106.0	105.0	103.0	105.0	95.0	75.0	64.0	50.0	38.8	31.6	26.4
60.0			94.0	93.0	91.0	94.0	90.0	69.0	64.0	50.0	38.8	31.6	26.4
65.0			85.0	84.0	82.0	84.0	84.0	64.0	59.0	50.0	38.8	31.6	26.4
70.0			76.0	76.0	76.0	76.0	79.0	59.0	55.0	50.0	38.8	31.6	26.4
75.0				69.0	71.0	69.0	72.0	55.0	52.0	48.0	38.8	31.6	26.4
80.0				64.0	65.0	63.0	66.0	51.0	48.0	45.0	38.8	31.6	26.4
85.0				61.0	60.0	58.0	60.0	47.0	44.0	42.4	38.8	31.6	26.4
90.0				49.0	55.0	55.0	56.0	43.2	40.6	39.4	37.2	31.6	26.4
95.0					51.0	52.0	51.0	40.4	37.8	36.6	35.4	31.6	26.4
100.0					47.0	49.0	48.0	38.8	35.4	34.2	33.4	31.4	26.4
105.0						46.0	44.0	37.4	32.8	31.8	31.6	30.0	26.4
110.0						43.0	41.0	36.2	30.8	30.0	29.6	28.8	26.4
115.0						40.2	38.2	35.0	28.8	28.0	27.8	27.4	26.4
120.0							36.4	35.6	34.0	27.0	26.2	26.0	25.2
125.0								33.0	33.0	25.4	24.6	24.6	24.2
130.0								30.6	32.0	23.8	23.0	23.0	22.6
135.0								29.0	30.6	22.0	21.2	21.2	20.8
140.0									28.4	20.0	19.2	19.6	19.6
145.0									26.6	18.2	18.2	18.8	18.0
150.0									24.8	17.2	17.6	18.0	17.0
155.0									21.4	16.0	17.0	17.2	16.0
160.0										15.0	16.4	16.6	15.0
165.0										14.0	15.8	16.0	14.4
170.0										13.2	15.4	15.4	13.8
175.0										11.8	14.8	14.8	13.0
180.0											14.4	14.2	12.4
185.0											14.0	13.8	12.0
190.0											13.6	13.2	11.4
195.0												12.8	10.8
200.0												12.2	10.4
205.0												11.8	9.8
210.0													9.4
215.0													9.0
220.0													8.6
225.0													7.4
230.0													6.4
235.0													5.6
240.0													4.8

* Over the rear with special equipment

Loads greater than 376,000 lb can only be lifted with special equipment.

THIS CHART IS ONLY A GUIDE AND SHOULD NOT BE USED TO OPERATE THE CRANE.

Intermediate angle and loads for luffing



74.8 m - 80 m
(245 ft - 263 ft)



12 m - 21 m
(39 ft - 69 ft)



92 500 kg
(203,900 lb)



27 ft 9 in spread
(100%)



360°



Pounds x 1000

Feet	245.3' + 39.4'			262.5' + 39.4'			245.3' + 68.9'			262.5' + 68.9'		
	5°	5°- 20°	20°- 40°	5°	5°- 20°	20°- 40°	5°	5°- 20°	20°- 40°	5°	5°- 20°	20°- 40°
55.0	18.6											
60.0	18.6	18.0		15.0	14.8							
65.0	18.6	18.0		15.0	14.8							
70.0	18.6	18.0		15.0	14.8		11.0			9.4		
75.0	18.6	18.0	18.0	15.0	14.8		11.0			9.4		
80.0	18.6	18.0	17.8	15.0	14.8	14.8	11.0	11.0		9.4	9.4	
85.0	18.6	18.0	17.6	15.0	14.8	14.8	11.0	11.0		9.4	9.4	
90.0	18.6	18.0	17.6	15.0	14.8	14.8	11.0	11.0		9.4	9.4	
95.0	18.6	18.0	17.4	15.0	14.8	14.8	11.0	11.0		9.4	9.4	
100.0	18.6	18.0	17.2	15.0	14.8	14.8	11.0	11.0	9.6	9.4	9.4	
105.0	18.6	18.0	17.2	15.0	14.8	14.8	11.0	11.0	9.4	9.4	9.4	9.4
110.0	18.6	18.0	17.0	15.0	14.8	14.8	11.0	11.0	9.4	9.4	9.4	9.2
115.0	18.6	18.0	17.0	15.0	14.8	14.8	11.0	10.8	9.2	9.4	9.4	9.2
120.0	18.6	18.0	16.8	15.0	14.8	14.8	11.0	10.6	9.2	9.4	9.4	9.2
125.0	18.6	18.0	16.8	15.0	14.8	14.8	11.0	10.6	9.2	9.4	9.4	9.0
130.0	18.6	18.0	16.6	15.0	14.8	14.8	11.0	10.4	9.0	9.4	9.4	9.0
135.0	18.4	18.0	16.6	15.0	14.8	14.8	11.0	10.2	9.0	9.4	9.4	9.0
140.0	17.8	17.6	16.4	15.0	14.8	14.8	11.0	10.2	9.0	9.4	9.4	8.8
145.0	17.0	17.0	16.4	15.0	14.8	14.8	11.0	10.0	8.8	9.4	9.4	8.8
150.0	16.2	16.2	16.2	15.0	14.8	14.6	11.0	9.8	8.8	9.4	9.4	8.8
155.0	15.4	15.4	15.6	14.6	14.6	14.4	11.0	9.8	8.8	9.4	9.4	8.8
160.0	14.6	14.6	15.0	14.2	14.2	14.2	11.0	9.6	8.8	9.4	9.4	8.6
165.0	14.0	14.0	14.4	13.8	13.6	13.6	10.8	9.6	8.6	9.4	9.4	8.6
170.0	13.4	13.4	13.6	13.2	13.2	13.2	10.6	9.4	8.6	9.4	9.4	8.6
175.0	12.6	12.6	13.0	12.4	12.4	12.8	10.4	9.4	8.6	9.4	9.2	8.6
180.0	11.8	11.8	12.4	12.0	12.0	12.2	10.4	9.2	8.6	9.4	9.2	8.6
185.0	11.0	11.0	11.6	11.4	11.4	11.8	10.2	9.2	8.6	9.4	9.2	8.4
190.0	10.4	10.4	11.0	10.8	10.8	11.2	10.0	9.0	8.6	9.4	9.0	8.4
195.0	9.6	9.6	10.2	10.2	10.2	10.6	10.0	9.0	8.4	9.4	9.0	8.4
200.0	9.0	9.0	9.6	9.6	9.6	10.0	9.6	9.0	8.4	9.4	8.8	8.4
205.0	8.6	8.6	8.8	9.0	9.0	9.6	9.4	8.8	8.4	9.2	8.8	8.4
210.0	8.2	8.2	8.4	8.4	8.4	9.0	9.0	8.8	8.4	8.8	8.6	8.4
215.0	7.8	7.8	8.0	8.0	8.0	8.4	8.4	8.4	8.4	8.6	8.6	8.4
220.0	7.4	7.4		7.4	7.4	7.8	7.8	7.8	8.4	8.2	8.2	8.4
225.0	7.0	7.0		6.8	6.8	7.2	7.4	7.4	8.2	7.8	7.8	8.0
230.0	6.6	6.6		6.4	6.4		6.8	6.8	7.6	7.4	7.4	7.8
235.0	6.2	6.2		5.8	5.8		6.4	6.4	7.0	6.8	6.8	7.6
240.0	5.8	5.8		5.2	5.2		6.0	6.0	6.6	6.4	6.4	7.2
245.0	5.6	5.6		4.6	4.6		5.8	5.8		6.0	6.0	6.6
250.0	5.2	5.2		4.0	4.0		5.4	5.4		5.6	5.6	6.2
255.0	4.8	4.8		3.4	3.4		5.2	5.2		5.0	5.0	5.6
260.0	4.4			3.0	3.0		4.8	4.8		4.4	4.4	
265.0				2.4	2.4		4.6	4.6		4.0	4.0	
270.0				2.0	2.0		4.2	4.2		3.4	3.4	
275.0							4.0	4.0		3.0	3.0	
280.0							3.8	3.8		2.4	2.4	
285.0							3.4	3.4		2.0	2.0	

THIS CHART IS ONLY A GUIDE AND SHOULD NOT BE USED TO OPERATE THE CRANE.

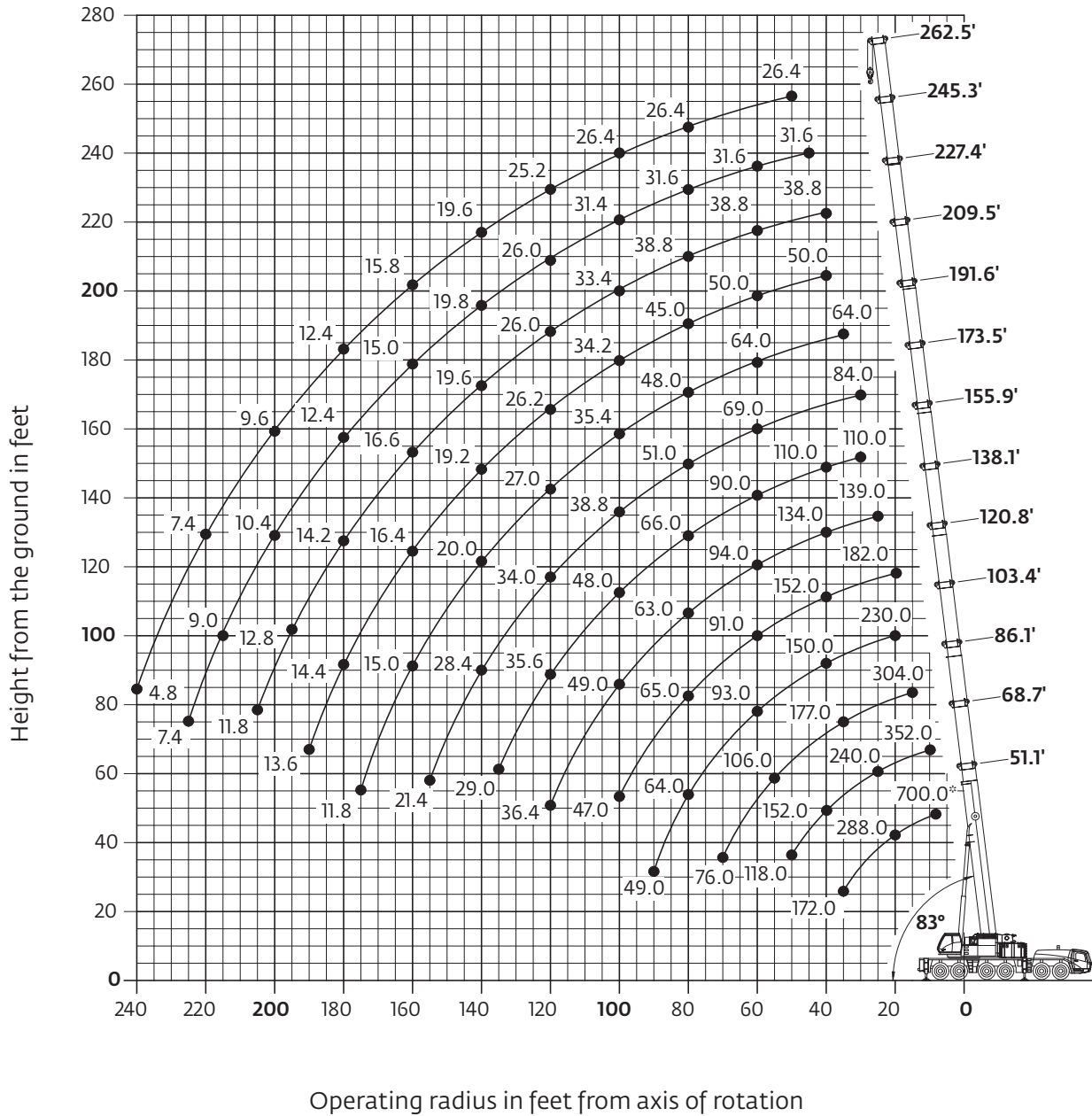
Grove GMK6300L The individual crane's load chart, operating instructions and other instructional plates must be read and understood prior to operating the crane


Working range

Main boom



51 ft - 263 ft main boom



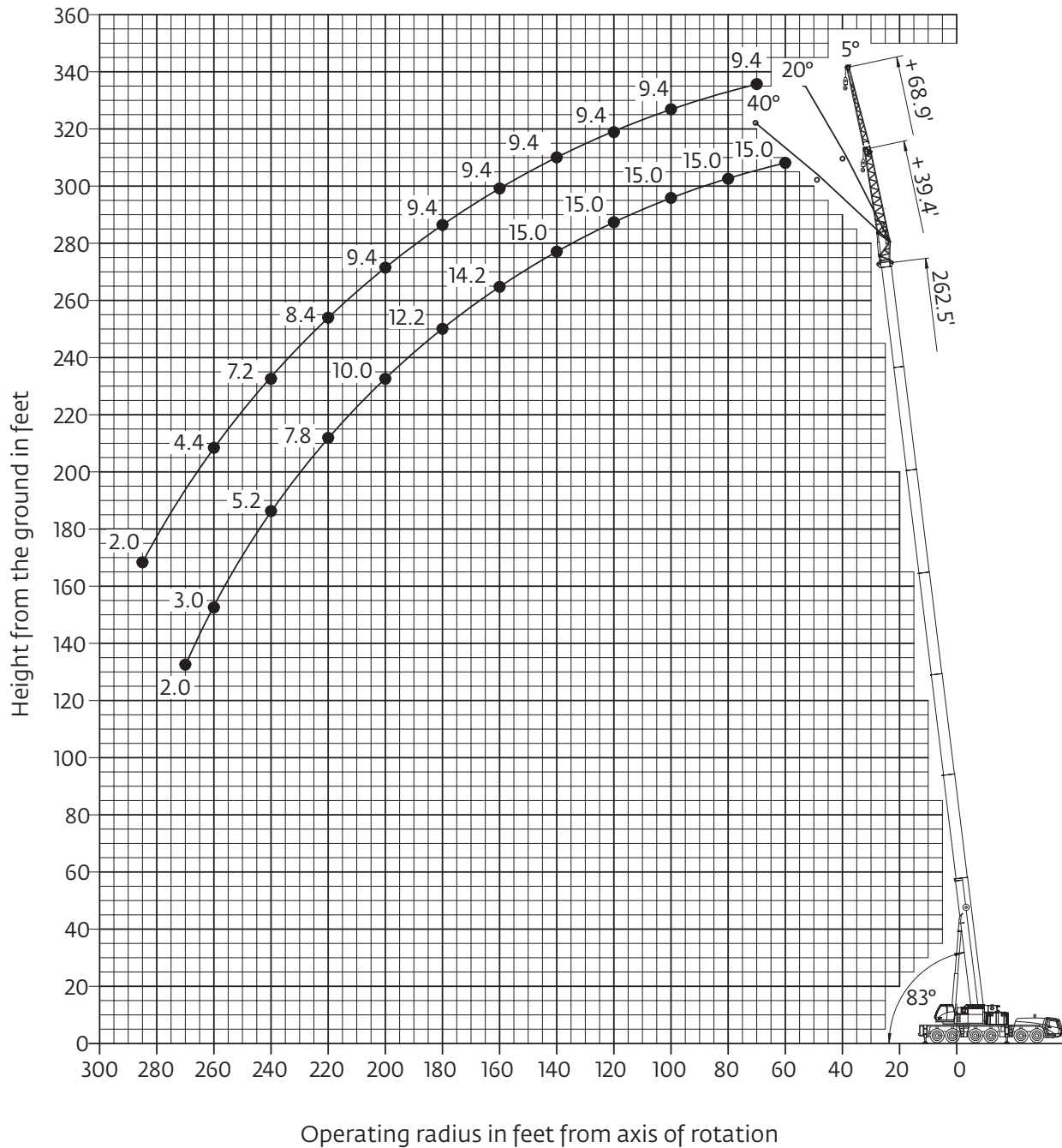
	Hook block	H
	200 ton, 9 sheave	
160 ton, 7 sheave		12.0 ft (3650 mm)
125 ton, 5 sheave		10.8 ft (3300 mm)
80 ton, 3 sheave		10.8 ft (3300 mm)
32 ton, 1 sheave		10.5 ft (3200 mm)
12 ton, single line headache ball		8.0 ft (2450 mm)

Working range

Hydraulic offsettable swingaway

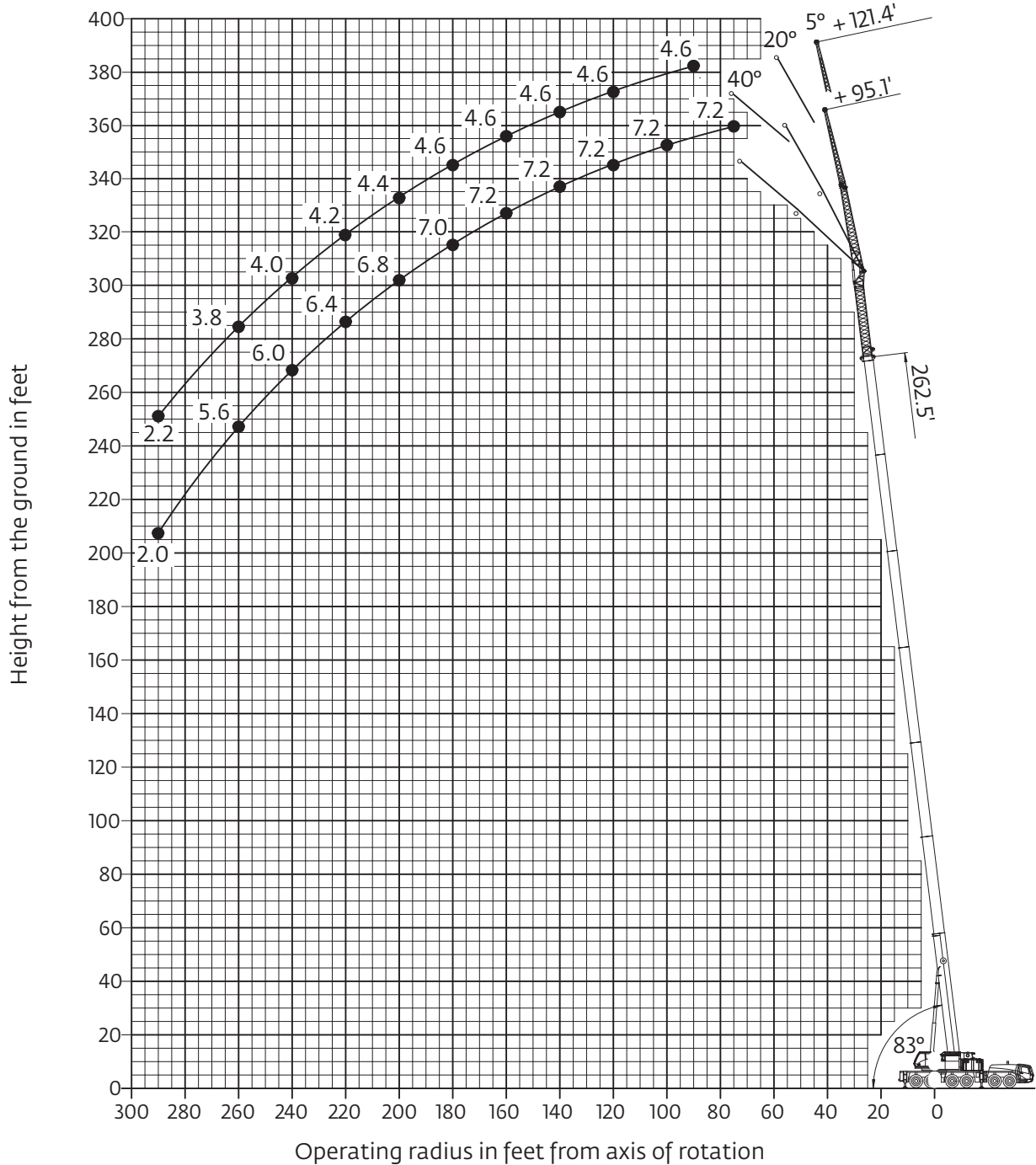


263 ft main boom with 39 ft - 69 ft swingaway



Hook heights shown in the working diagram do not consider loaded boom deflection.

263 ft main boom with 39 ft - 69 ft swingaway and 2 X 26 ft inserts



Hook heights shown in the working diagram do not consider loaded boom deflection.

Superstructure continued

Hoist

Main and auxiliary hoist are powered by axial piston motor with planetary gear and brake. "Thumb-thumper" hoist drum rotation indicator alerts operator of hoist movement.

	Main	Auxiliary
Rope length:	350 m (1148 ft)	350 m (1148 ft)
Rope diameter:	22 mm	22 mm
Line speed:	127 m/min (417 fpm)	127 m/min (417 fpm)
Line pull:	93.5 kN (21,020 lb)	93.5 kN (21,020 lb)

Hoist camera and light included.

*Optional hook blocks

Lifting capacity	Sheaves	Weight	Parts of line	Possible load with the crane
200 t (220 USt)	9	2400 kg (5291 lb)	2-16	179 t/190 t* (197 USt/209 USt*)
160 t (176 USt)	7	1750 kg (3858 lb)	2-15	135 t (182 USt)
125 t (138 USt)	5	1650 kg (3638 lb)	2-11	100 t (110 USt)
80 t (88 USt)	3	950 kg (2094 lb)	1-7	65 t (72 USt)
32 t** (35 USt)	1	600 kg (1323 lb)	1-3	28 t (31 USt)
12 t*** (13.2 USt)	H/B	300 kg (661 lb)	1	9,5 t (10.5 USt)

* Requires additional boom nose sheave

** Required for overhaul of single part line with boom/jib lengths in excess of 80 m (262.5 ft)

*** Overhaul weight designed for a maximum of 80 m (262.5 ft) boom/jib lengths

*Optional equipment

- ▶ Work lights, mounted on boom base section
- ▶ Boom mounted aircraft warning light
- ▶ Air conditioning
- ▶ Hook blocks/headache ball
- ▶ Engine independent diesel cab heater, with engine pre-heater. Includes 24 hour timer.
- ▶ Data logger
- ▶ 360° NYC swing lock
- ▶ 2 m (6.6 ft) side stowed heavy duty jib with 38 t (84,000 lb) maximum capacity using four parts of line, offset 8° and 30°
- ▶ Camera system for boom head

Carrier

Chassis

Box type, torsion resistant frame is fabricated from high strength steel.

Outrigger system

Four hydraulic two stage outrigger beams with vertical cylinders and outrigger pads, 700 mm (27.6 in) round. Outrigger can be set in 5 positions:

Full:	8,5 m (27.9 ft)
Partial:	7,4 m (24.3 ft)
Partial:	6,3 m (20.7 ft)
Partial:	5,0 m (16.4 ft)
Retracted:	2,7 m (8.9 ft)

Independent horizontal and vertical movement controlled from each side of carrier and the superstructure cab. Electronic crane level indicators. Hydraulic disconnect for all outrigger beams. Work light for each outrigger beam and outrigger pad load indicator with read out on both sides of carrier and in superstructure cabin. Includes outrigger monitoring system.



Transmission

Allison automatic 4500 SP, 6 speeds forward, 1 reverse
2 speed transfer case



Drive/steer

12x6x12